
IMAGES

Headache secondary to an odontoma

JAVIER JORGE MARTÍNEZ FERNÁNDEZ

Medicina Familiar y Comunitaria. Servicio de Urgencias. Obra Hospitalaria Nuestra Señora de Regla. León, Spain.

A 29-year old man with no medical history consulted for headache, which he described as piercing pain in the frontal region of 15 days duration. Physical examination of the oral cavity showed a hard, cracked, movable brownish-grey mass, over the teeth of lower jaw. Cranial X-ray showed a large calcium-like mass, less dense at the periphery, looking like teeth. The diagnostic impression was complex odontoma, with pain possibly due to trigeminal nerve involvement. Analgesics were administered and the patient was referred to a maxillofacial surgeon.

Odontoma is a benign mixed neoplasm of odontogenic origin, infrequent, and consists of odontogenic epithelial and mesenchymal cells, fully differentiated and forming enamel, dentin and cement. It may occur at any age, but especially in the second decade of life, predominantly in men. The most common location is the upper jaw. Radiographically, it presents as an irregular radiopaque mass, single or multiple, with multiple radiopacities adopting a configuration similar to teeth (denticles) surrounded by radiolucent halo.

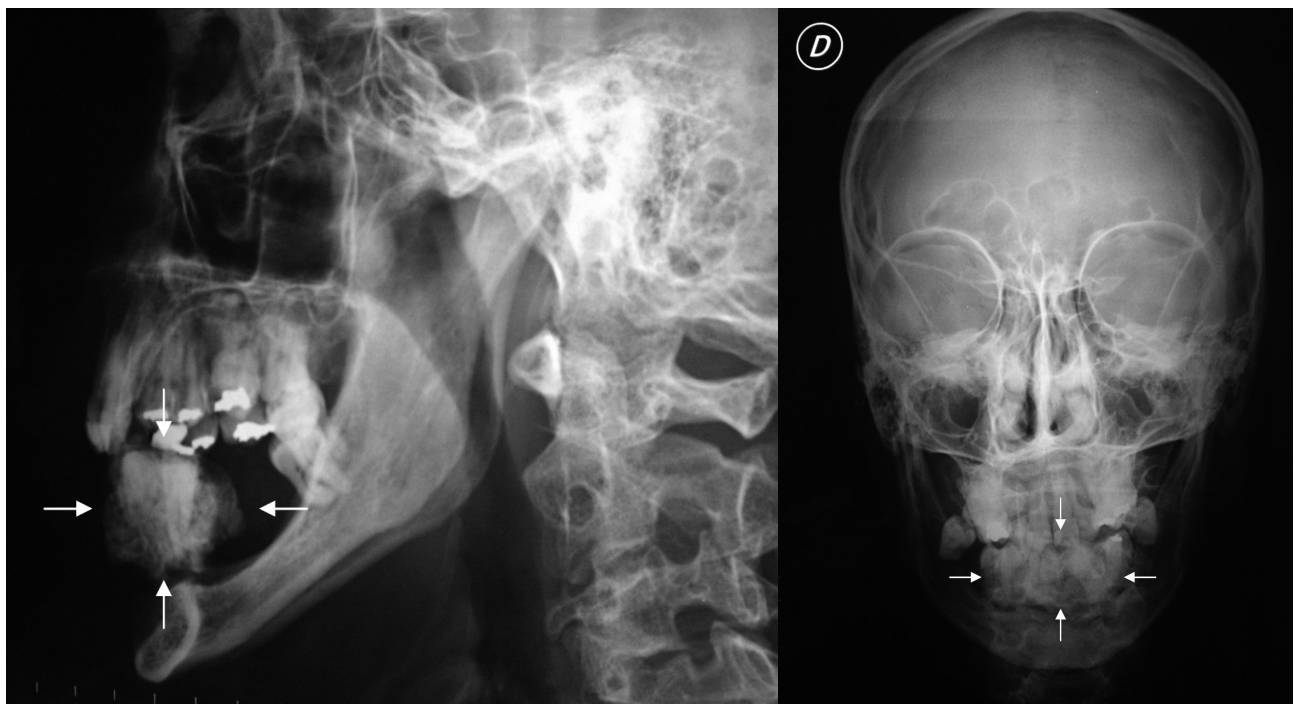


Figure 1. Lateral radiograph (left) and anteroposterior (right).

CORRESPONDENCE: Javier Jorge Martínez Fernández. Servicio de Urgencias. Obra Hospitalaria Nuestra Señora de Regla de León. Cardenal Landuri, 2. 24003 León, Spain. E-mail: javiermartinez@ibermutuamur.es

RECEIVED: 2-6-2008. **ACCEPTED:** 3-6-2008.

CONFLICT OF INTEREST: None.